

LDC600XSFP-COB-PLUS-L

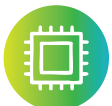
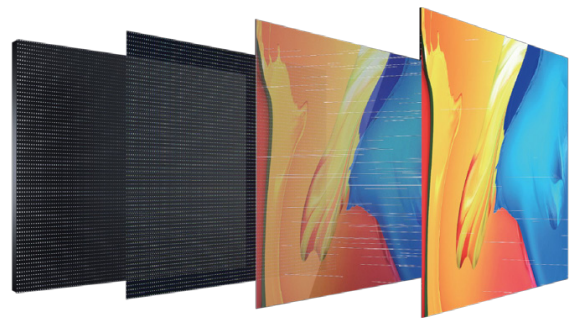


Premium Super Fine Pixel COB LED Display



ULTIMATE ENERGY EFFICIENCY

- Complete flip-chip COB+ with energy-saving common cathode technology.
- In-house developed high-efficiency power supply and dynamic voltage control.
- Supports standby mode for the control system, with power consumption $\leq 0.5W$



Flip Chip



Common Cathode



R 2.8V
BG 3.6V



0.5W*



90% PSU Efficiency

SUPERIOR DISPLAY QUALITY

- Supports high brightness of 800nits
- Up to 7680Hz refresh rate, 15000:1 contrast ratio, nanosecond-level response time, reduced motion blur, and scanlines
- RGB colour mixing technology and unique surface COB+ coating.



800nits



7680Hz



Hyber bit
2.0*



Colour Space
Conversion



HDR10



RELIABLE STABILITY

- Industry-leading, highly integrated design.
- Fully hard-wired connection and lightweight design with internal wireless connectivity.
- COB+ with 6-level protection and a 3H surface hardness



3/2 in 1



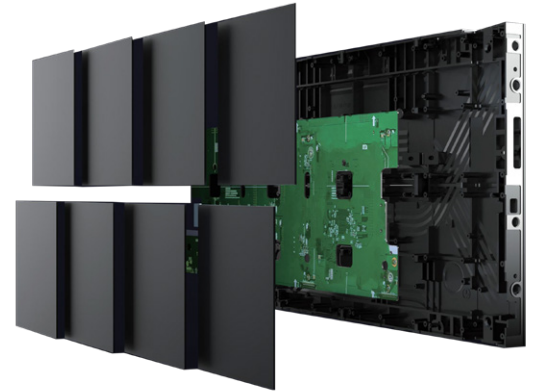
Wireless & minimalistic design



6 Levels protection



3H Hardness



CONVENIENT INSTALLATION

- Lightweight 3.8kg design with a slim 31mm cabinet.
- Streamlined large cabinets for efficient installation.
- Universal design with cabinet kit and modules.
- Supports wall mounting, hanging, base, concave, and 90 degree assembly



31mm



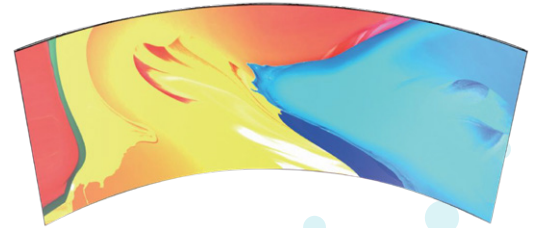
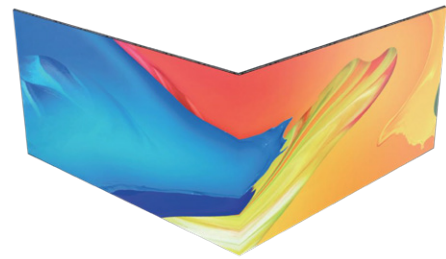
3.8KG



Universal design



Multiple installations



INNOVATIVE AND USER FRIENDLY DESIGN

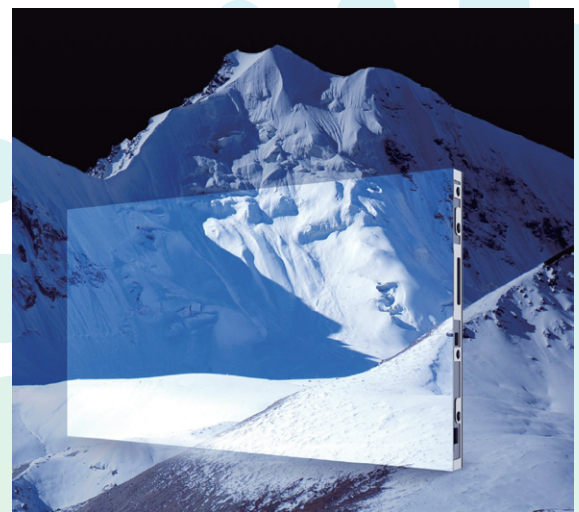
- Low heat emission, with COB+ surface temperature as low as 37°C.
- Ergonomic design for enhanced comfort, supported by human factors data to deliver a more realistic and high-quality visual experience.
- Multiple scene modes available: Standard, Soft, Cinema, Meeting, and User-defined.



Multi-scene modes



**CE ETL
FCC RoHS**



SPECIFICATIONS

MODEL	LDC60009SFP-COB-PLUS-L	LDC60012SFP-COB-PLUS-L	LDC60015SFP-COB-PLUS-L
LED Type	COB+		
Pixel Pitch (mm)	0.93	1.25	1.56
Cabinet Resolution (dots)	640×360	480×270	384×216
Cabinet Weight (kg)	3.8		
Cabinet Material	Magnesium Aluminum		
Cabinet Size (W×H×D) (mm)	600×337.5×31		
Module Size (mm)	150×168.75		
Contrast	15000:1		
Refresh Rate (Hz)	3840 / 7680		
Brightness (Nit)	800		
Power Consumption (Max./Ave.) (W/m ²)	287 / 86	339 / 102	285 / 86
Gray Scale (Bit)	13 / 16		
Viewing Angle (H/V°)	165 / 165		
Maintenance	Front Access		
AC Input Voltage (V)	AC 100-240		
Operating Temperature/Humidity	-10°~40° / 10%~80% No condensation		



GET IN TOUCH

Phone: +611 300 841 5 42

Email: sales@aurorasignage.com.au

Website: www.aurorasignage.com.au

ABN 22 620 120 836